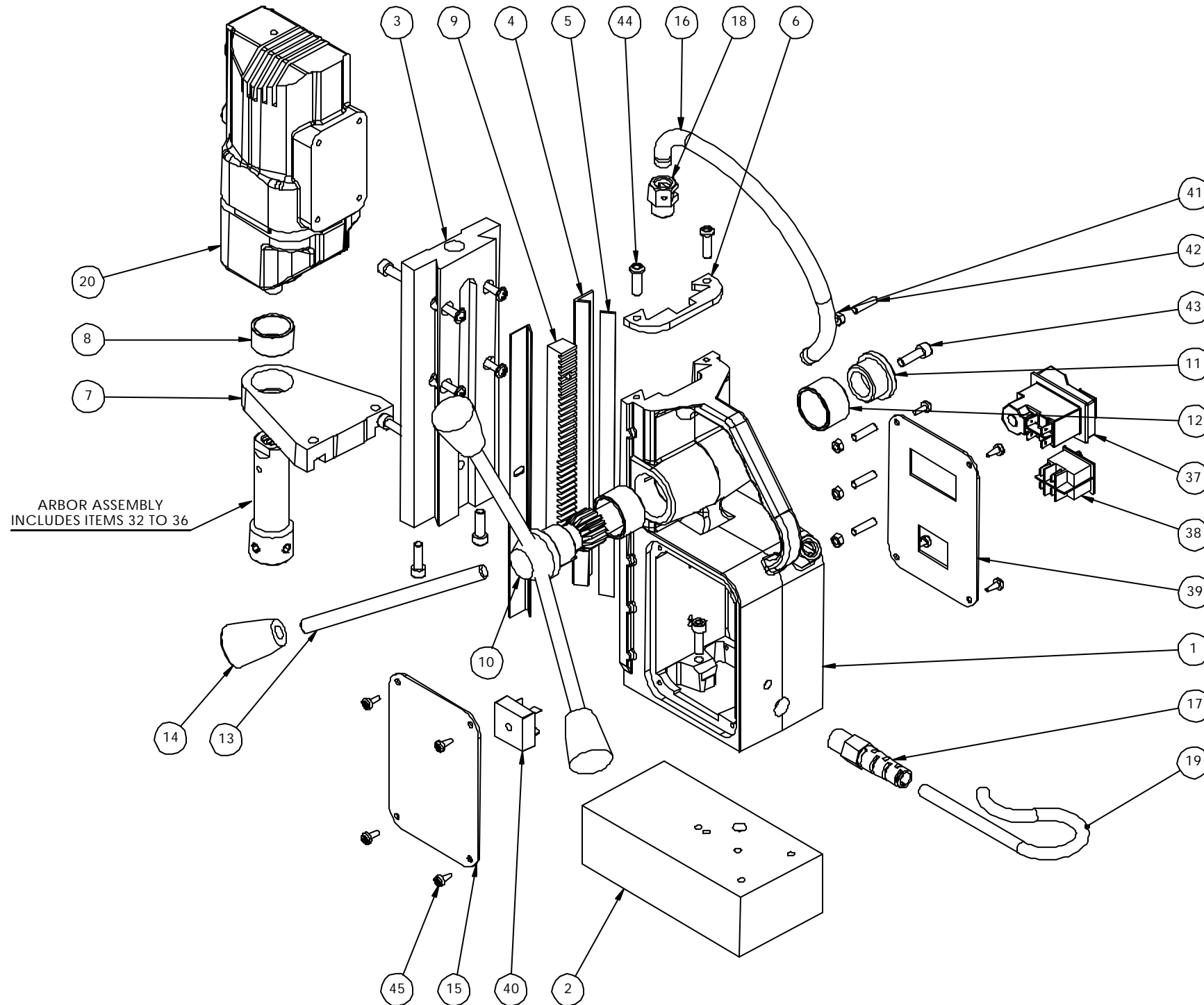


FIRST ANGLE PROJECTION DO NOT SCALE IF IN DOUBT - ASK

COPYRIGHT (C)1998, UDCE Ltd. 43 CATLEY ROAD, DARNALL, SHEFFIELD, S9 5JF
THIS DRAWING MAY NOT BE REPRODUCED OR COPIED IN PART OR WHOLE,
WITHOUT THE EXPRESS PERMISSION OF UDCE Ltd.

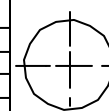


ISSUE	DESCRIPTION	DATE

NOTE
GUARD DETAILS NOT SHOWN
ON EXPLODED VIEW

ITEM NO	PART NO	DESCRIPTION	QTY
1	M0010RA	BODY MB30 (FEIN ORANGE)	1
2	M0031	MAGNET BASE (SMALL)	1
3	M0161	SLIDE (MB30)	1
4	M0101	BRASS RAIL (MB30)	2
5	M0441	G.F.S. (MB30)	1
6	M0811	TOP PLATE (MB30)	1
7	M0511	FRONT STEADY MB30	1
8	M0521	BUSH (MB30 STEADY)	1
9	M0831	RACK (MB30)	1
10	M0041	PINION - MB30 (SMALL)	1
11	M0072	PINION END CAP (DEEP)	1
12	M0081	BUSH (PINION)	2
13	M0061	HANDLE (10mm SMALL)	3
14	M0841	HANDLE KNOB (10mm KNOCK ON)	3
15	M0221	WARNING PLATE (MB30)	1
16	M0444	CONDUIT (BLACK)	1
17	10231	M16 STRAIN RELIEF CABLE GLAND	1
18	M0451	CABLE GLAND (MAGTRON)	2
19	10237-1	CABLE YELLOW (110V)	1
20	HITA01	DRILL (HITACHI D13 110V)	1
21	M0960	HITACHI DRILL CHUCK & KEY	1
22	STRAP01	POLYESTER WEBBING SAFETY STRAP	1
23	OIL09	COOLCUT 500ML OIL BOTTLE	1
24	KEY01	ALLEN KEY 2.5MM	1
25	KEY03	ALLEN KEY 4MM	1
26	KEY04	ALLEN KEY 5MM	1
27	M0961	HITACHI D HANDLE	1
28	CASE01	CARRYING CASE-MINIBOR-PLASTIC	1
29	BOX05	BOX (MINIBOR SLEEVE)	1
30	VISO08	NEW GUARD TO SUIT-HIT/MAK/UNI1	1
31	10091	M10 GUARD LOCKING NUT-HITACHI	1
32	M0501-A	MB30 ARBOR BODY	1
33	10208	ARBOR SPRING (MB30)	1
34	10205	ARBOR EJECTION PLUG LARGE	1
35	10207	CIRCLIP (19mm INTERNAL)	1
36	10069	M8 X 8 SET SCREW (FLAT POINT)	2
37	NCP001	DRILL STOP/START SWITCH - 120V	1
38	NCP006	MAGNET SWITCH - NCP PANEL	1
39	NCP11	NCP SWITCH PLATE BLANK (SMALL)	1
40	M0401	25A - BRIDGE RECTIFIER	1
41	NUT-M5	M5 NUT	5
42	SC520GRUB	M5 x 20 GRUB SCREW	5
43	SC620CAP	M6 x 20 CAP SCREW	7
44	SC620BUT	M6 x 20 BUTTON HEAD SCREW	2
45	SC3TAP	M3 SELF TAPPING SCREW	8

TITLE	SCALE	1:5	ISSUE	1	DIMENSIONS IN MILLIMETERS
MB30 QUICK RELEASE DRILL EXPLODED VIEW	DRAWN BY	L. STOREY	DATE	29/07/05	NO DECIMAL PLACE ±0.25
	APPROVED BY		DATE		ONE DECIMAL PLACE ±0.10
	DWG NUMBER	MB30			TWO DECIMAL PLACES ±0.05
					ANGULAR ±1.00°
					SURFACE FINISH 3.2 ✓

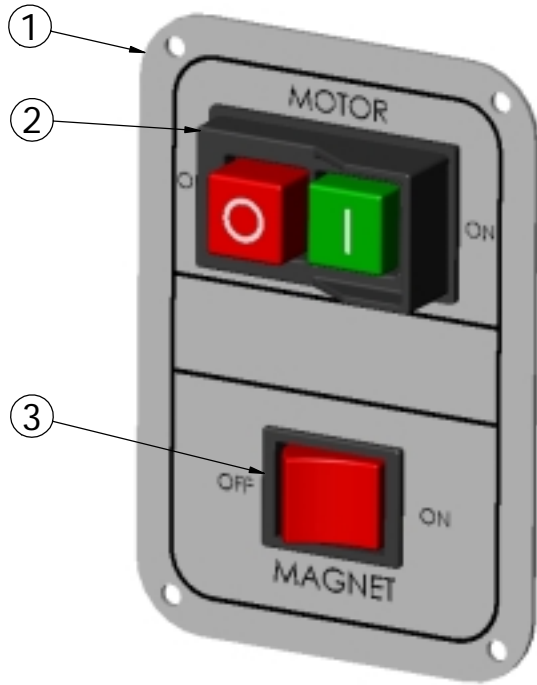


universal
43 Catley Road, Darnall, Sheffield, England. S95JF

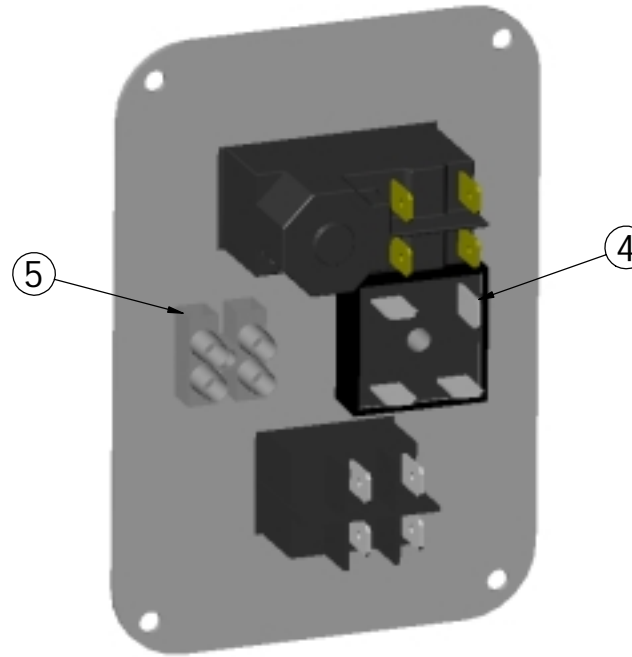
Drilling & Cutting
EQUIPMENT LIMITED

Tel. +44(0)114 2911000. Fax. +44(0)114 2425905

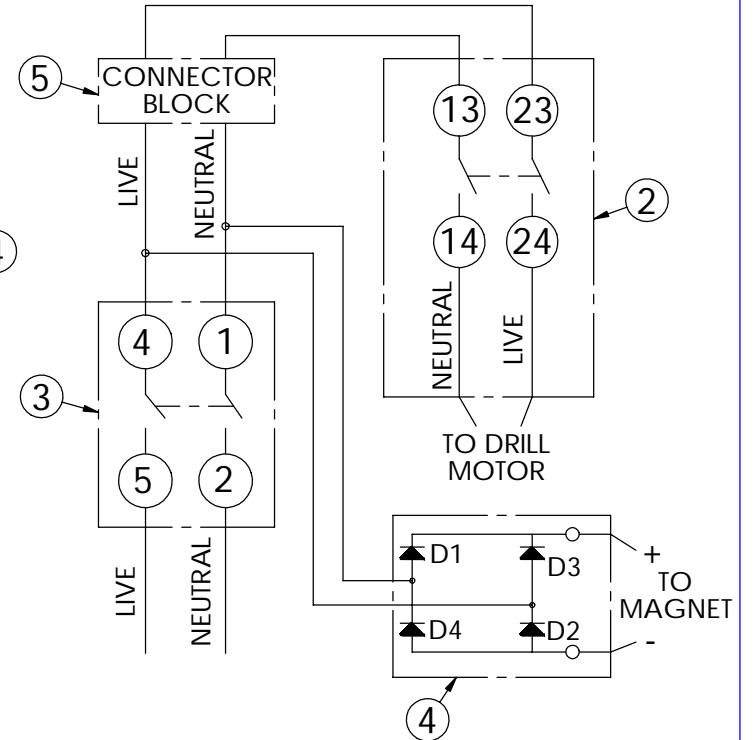
ISSUE	DESCRIPTION	DATE



FRONT VIEW



REAR VIEW



ITEM NO.	QTY.	PART NO.	DESCRIPTION
1	1	NCP11	NCP SWITCH PLATE BLANK (SMALL)
2	1	NCP001	DRILL STOP/START SWITCH-120v
3	1	NCP006	MAGNET SWITCH-NCP PANEL
4	1	M0401	25A-BRIDGE RECTIFIER
5	1	BD044	TWIN CONNECTOR BLOCK

NOTES:
1. ITEM 5 AND 4 TO BE BONDED TO REAR OF PLATE

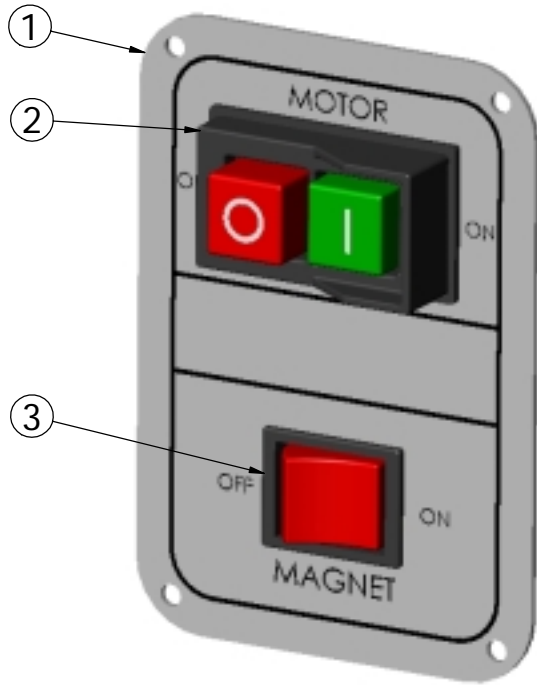
TITLE	SCALE	NTS	ISSUE	1
COMPONENT PARTS LIST AND WIRING SCHEMATIC FOR NCP PANEL 110v	DRAWN BY	M.KAYE	DATE	30.04.06
	APPROVED BY		DATE	
	DWG NUMBER	PANELNCP03		



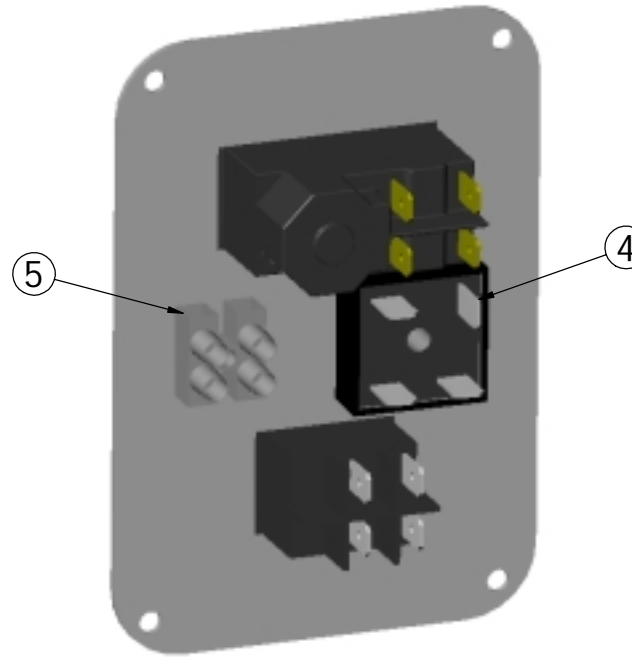
universal

Drilling & Cutting
EQUIPMENT LIMITED

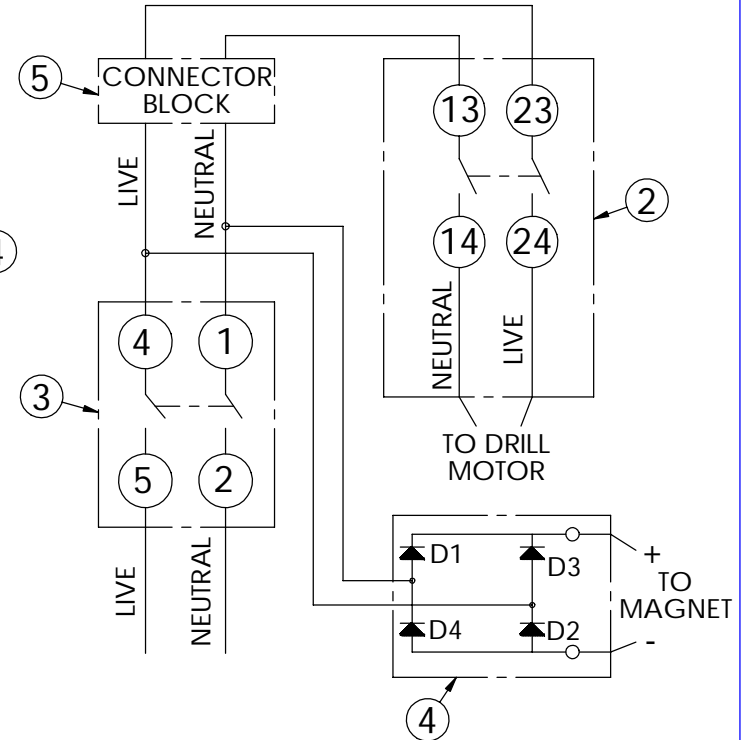
ISSUE	DESCRIPTION	DATE



FRONT VIEW



REAR VIEW



ITEM NO.	QTY.	PART NO.	DESCRIPTION
1	1	NCP11	NCP SWITCH PLATE BLANK (SMALL)
2	1	NCP002	DRILL STOP/START SWITCH-240v
3	1	NCP006	MAGNET SWITCH-NCP PANEL
4	1	M0401	25A-BRIDGE RECTIFIER
5	1	BD044	TWIN CONNECTOR BLOCK

NOTES:
1. ITEM 5 AND 4 TO BE BONDED TO REAR OF PLATE

TITLE	SCALE	NTS	ISSUE	1
COMPONENT PARTS LIST AND WIRING SCHEMATIC FOR NCP PANEL 240V	DRAWN BY	M.KAYE	DATE	30.04.06
	APPROVED BY		DATE	
	DWG NUMBER	PANELNCP04		



universal

43 Catley Road, Darnall, Sheffield, England. S95JF

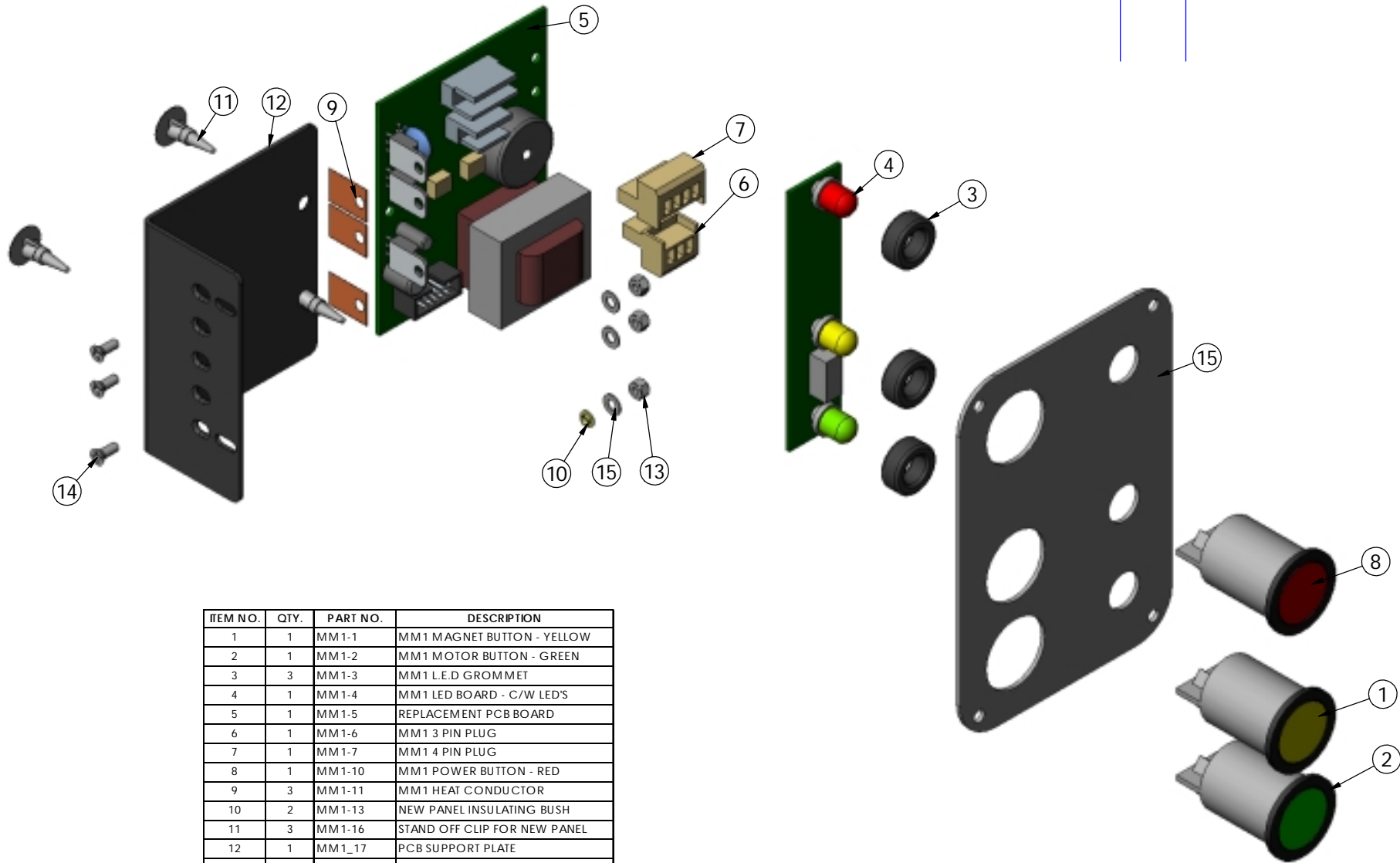
Drilling & Cutting
EQUIPMENT LIMITED

Tel. +44(0)114 2911000. Fax. +44(0)1142425905

FIRST ANGLE PROJECTION DO NOT SCALE IF IN DOUBT - ASK

COPYRIGHT (C)1998, UDCE Ltd. 43 CATLEY ROAD, DARNALL, SHEFFIELD, S9 5JF
THIS DRAWING MAY NOT BE REPRODUCED OR COPIED IN PART OR WHOLE,
WITHOUT THE EXPRESS PERMISSION OF UDCE Ltd.

ISSUE	DESCRIPTION	DATE



ITEM NO.	QTY.	PART NO.	DESCRIPTION
1	1	MM1-1	MM1 MAGNET BUTTON - YELLOW
2	1	MM1-2	MM1 MOTOR BUTTON - GREEN
3	3	MM1-3	MM1 L.E.D GROMMET
4	1	MM1-4	MM1 LED BOARD - C/W LED'S
5	1	MM1-5	REPLACEMENT PCB BOARD
6	1	MM1-6	MM1 3 PIN PLUG
7	1	MM1-7	MM1 4 PIN PLUG
8	1	MM1-10	MM1 POWER BUTTON - RED
9	3	MM1-11	MM1 HEAT CONDUCTOR
10	2	MM1-13	NEW PANEL INSULATING BUSH
11	3	MM1-16	STAND OFF CLIP FOR NEW PANEL
12	1	MM1_17	PCB SUPPORT PLATE
13	3	NUT-M3	M3 NYLOC NUT
14	3	SC36CSK-X	M3 X 6 C'SINK CROSS HEAD SCREW
15	1	-	PANEL FACIA PLATE

TITLE	SCALE	N.T.S	ISSUE	1	DIMENSIONS IN MILLIMETERS
PANEL COMPONENT BREAKDOWN	DRAWN BY	M.KAYE	DATE	21.05.06	NO DECIMAL PLACE ±0.25
	APPROVED BY		DATE		ONE DECIMAL PLACE ±0.10
	DWG NUMBER	PANELP			TWO DECIMAL PLACES ±0.05
					ANGULAR ±1.00°
					SURFACE FINISH 3.2 ✓



universal

43 Catley Road, Darnall, Sheffield, England. S95JF

Drilling & Cutting
EQUIPMENT LIMITED

Tel. +44(0)114 2911000. Fax. +44(0)1142425905